

MINOLTA

Dimâge 2300

E SOFTWARE INSTRUCTION MANUAL

For Windows®98

For USB Connection

This manual does not provide instructions for the basic operation of personal computers, or the basic operation of Windows® operating system. Please refer to the manual that came with your computer for information on the above mentioned topics.

- Microsoft® and Windows® are registered trademarks in the United States and other countries of Microsoft Corporation.
- The official name of Windows® is Microsoft® Windows® Operating System.
- Pentium® is a registered trademark of Intel Corporation.
- Other company and product names are the trademark or registered trademark of their respective owners.

TABLE OF CONTENTS

BEFORE YOU BEGIN	
USER REGISTRATION	4
TERMS USED IN THIS MANUAL.....	5
SYSTEM REQUIREMENTS	6
INSTALLING THE SOFTWARE.....	8
INSTALLING THE MGI PHOTOSUITE SE	10
CONNECTING THE CAMERA TO THE PC.....	11
LAUNCHING THE SOFTWARE	
LAUNCHING THE UTILITY SOFTWARE	14
LAUNCHING THE TWAIN DRIVER.....	16

USING THE SOFTWARE

- COPYING IMAGE FILES TO THE HARD DRIVE21**
- ACQUIRING IMAGES INTO THE APPLICATION21**

- DELETING IMAGE FROM THE CF CARD.....26**

- VIEWING IMAGE FILE PROPERTIES28**

- QUITTING THE UTILITY SOFTWARE30**
- QUITTING THE TWAIN DRIVER.....31**

BEFORE YOU BEGIN

USER REGISTRATION

Please register this software before you begin using it. Complete both sides of the enclosed user registration card, detach along the perforated line, and mail. No postage is necessary.

Persons who register their software are recognised as official users, and receive technical support as well as software upgrade and other new product information.

- Please be aware that you will not receive any notification of registration from Minolta.
- The information contained on your registration card is used exclusively by Minolta for customer service and product development. The information you provide will be kept private and confidential.

TERMS USED IN THIS MANUAL

- This manual assumes that your computer's operating system (Windows®98) as well as other necessary software such as device drivers have been installed, and are operating properly.
- This manual assumes the use of a two-button, right-handed mouse for Windows®. The terms 'click' and 'double-click' refer to a single or double click of the left mouse button. The term 'drag' refers to the action of holding down the left mouse button while moving the mouse.

SYSTEM REQUIREMENTS

The system requirements for the operation of this software are as shown below:

	IBM PC/AT compatible computers
Computers	IBM PC/AT compatible computers ¹
CPU	Intel Pentium Processor 90MHz or higher
OS	Windows®98, Windows®98 Second Edition ²
RAM	A minimum of 32MB of RAM
Hard Disk Space	80MB or more of free hard disk space for use as workspace
Monitor	VGA (640 x 480) or higher/High Colour (16-bit)
CD-ROM Drive	Required for installation
Interface	USB (Universal Serial Bus) ³
Others	TWAIN driver is compatible with Adobe Photoshop Ver. 4.0.1, 5.0.2, and 5.5, Adobe Photoshop LE Ver. 5.0, MGI PhotoSuite SE Ver. 1.0, Paint Shop Pro 5.0, and Corel Photo Paint 8

- 1 Not including computers built from kits, shop-brands or other computers for which components have been selected and assembled individually.
- 2 Pre-installed Windows®98/Windows®98 Second Edition only. Windows®98 upgraded from Windows®95 does not be guaranteed.
- 3 USB (Universal Serial Bus) port that each PC maker guarantees to operate without problem.

INSTALLING THE SOFTWARE

Use the following procedure to install Dimâge 2300 software on your computer.

The following explanation refers to the hard disk drive as drive C and the CD-ROM drive as drive D.

- 1 Turn the computer on to start up Windows®98.**
- 2 Insert the Dimâge 2300 CD-ROM into the CD-ROM drive.**
 - The Choose Setup Language window opens.



- 3 Select the language for the installation and click on 'OK'.**
 - The Dimâge 2300 Setup program opens.



- In the event that the Dimâge 2300 Setup program does not open automatically, click on the Start button, and then click on Run. Enter D:\Setup.exe in the text box and click on OK.

4 Click on 'Next >'.

- The Select Components window will appear.



5 Make sure that the checkbox is marked, then click on 'Next >'.

- Setup will begin. After copying files, the building of driver information database will start automatically.
- After building driver information database, the following window will appear.



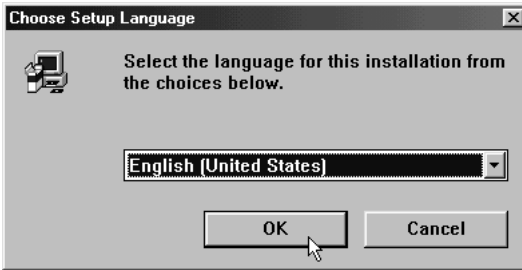
6 Remove any disks from their drives, then click on 'Finish'.

- The Setup program will complete and Windows® will be restarted.

INSTALLING THE MGI PHOTOSUITE SE

Use the following procedure to install MGI PhotoSuite SE on your computer.

- 1 Turn the computer on to start up Windows®98.**
- 2 Insert the MGI PhotoSuite SE CD-ROM into the CD-ROM drive.**
 - After a while, the following screen will appear.



- 3 Select the language for the installation and click on 'OK'.**
 - The MGI PhotoSuite SE Setup program opens.

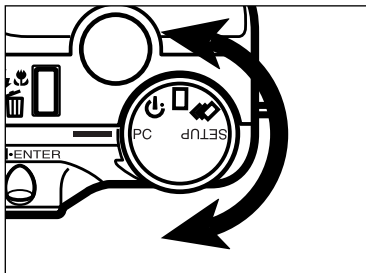


- 4 Click on 'Next >', then follow the direction on the screen.**

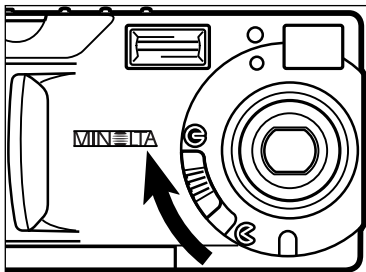
CONNECTING THE CAMERA TO THE PC

Connect the Dimâge 2300 and your personal computer.

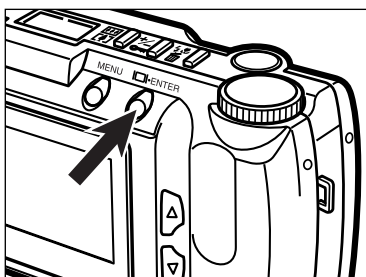
- 1 Turn the computer on to start up Windows®98.**



- 2 Turn the Function dial of the camera to PC.**



- 3 Move the lens cover slide to G.**

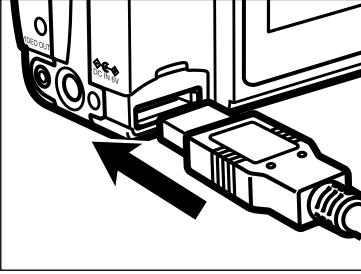


- 4 Press and hold the display/ENTER button.**

- The camera will be turned on and "PC MODE" will appear in the upper-left corner of the camera's LCD monitor.

PC MODE

CONNECTING THE CAMERA TO THE PC - CONT'D



- 5** Attach the one end which has wider plug of the USB cable to the Dimâge 2300 USB/Serial connector.

- 6** Attach the other end of the USB cable to the USB port on the personal computer.

- *After connecting the Dimâge 2300 to the personal computer, Windows® system will detect the Dimâge 2300 as a new hardware (New Hardware Found window will appear), and will install necessary files automatically.*

LAUNCHING THE SOFTWARE

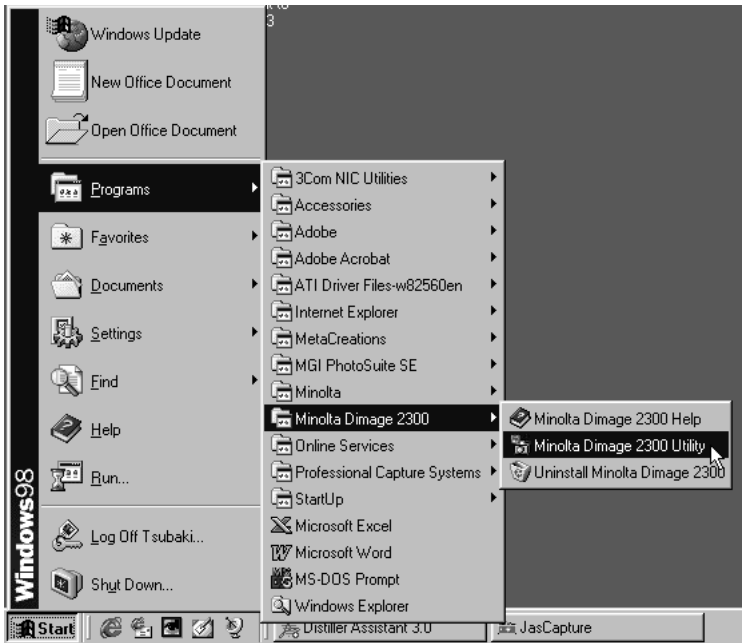
LAUNCHING THE SOFTWARE

Following explanation is on the assumption that the Dimâge 2300 has already been connected to the personal computer (see pages 11 to 12).

LAUNCHING THE UTILITY SOFTWARE

1 Select Start → Programs → Minolta Dimâge 2300 → Minolta Dimâge 2300 Utility.

- Dimâge 2300 utility main window shown at the right will appear.





If there are a few TIFF files (image files that were taken with SUPER FINE image quality) or too many image files in the CF card, it could take some time the utility software is launched.

For example, 300 image files that were taken with ECONOMY image quality saved in the CF card, will take approx. 5 minutes until the utility software is launched.

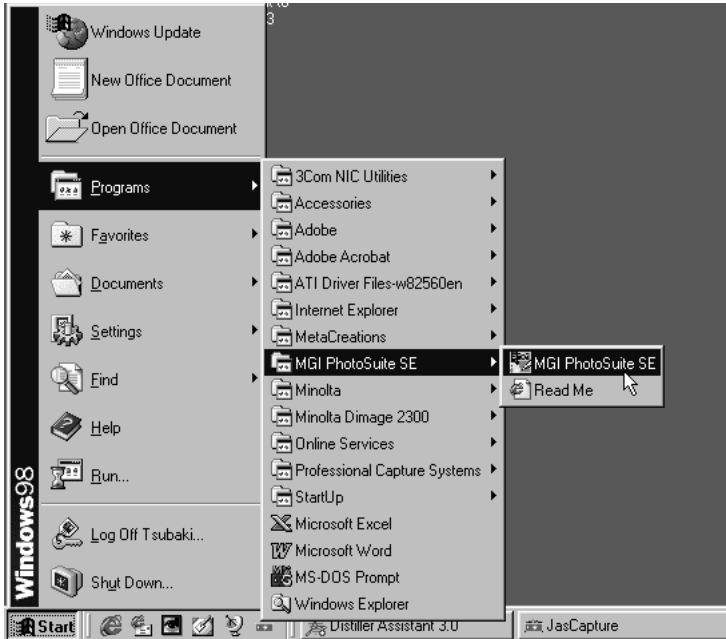
LAUNCHING THE SOFTWARE

LAUNCHING THE TWAIN DRIVER

This example uses MGI PhotoSuite SE as a TWAIN compliant application. The procedure will vary for other applications. See the operating manual for your application.

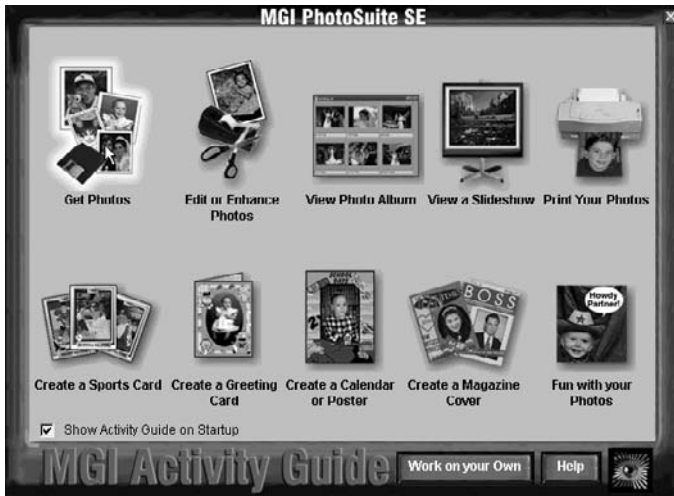
1 Select Start → Programs → MGI PhotoSuite SE → MGI PhotoSuite SE to launch.

- MGI PhotoSuite SE Activity Guide window shown at the right will appear.



2 Click on 'Get Photos' in the Activity Guide window.

- Get Photos window will appear.



3 Click on 'Digital Camera' in the Get Photos window.

- After a while, Dimâge 2300 utility main window will be opened on the MGI PhotoSuite SE window.



LAUNCHING THE SOFTWARE - CONT'D

- Dimâge 2300 utility main window will be opened on the MGI PhotoSuite SE window.



When the computer is unable to detect a connection to the Dimâge 2300, the following error message opens.



In such a case, perform the following troubleshooting operations:

1 Click on 'OK' to close the error message window.

2 Check the following:

- Did you turn on the Dimâge 2300?
- Is the USB cable connected properly?
- Has the USB cable separated from a connector?
- Has the USB cable been cut or damaged?
- Did you set the Function dial of the Dimâge 2300 to PC?

3 After verifying that all of the above have been performed properly, try to connect to the Dimâge 2300 again, following the instructions on pages 11 to 12.

USING THE SOFTWARE

USING THE SOFTWARE

COPYING IMAGE FILES TO THE HARD DRIVE

ACQUIRING IMAGES INTO THE APPLICATION

When using Dimâge 2300 Utility software

Copy some or all of the image files saved in the compact flash card to your computer's hard drive or other memory device.

When using TWAIN driver

Acquire some or all of images into the image processing application.

1 Click on the images to be copied or acquired.

- The selected image(s) will be highlighted.
- To select two or more images, press and hold Ctrl (Control) key and click on the images to be copied or acquired.
- To select all the images, click on 'Select All' in the display.

<Dimâge 2300 Utility Software>



<TWAIN Driver>

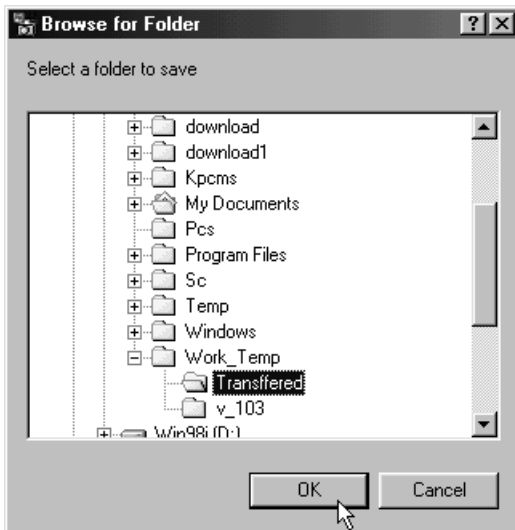


USING THE SOFTWARE - CONT'D

When using the Dimâge 2300 Utility Software:

2 Click on 'Transfer'.

- The Select a Folder dialog box opens.



3 Select the folder to which the files are to be copied, and click on 'OK'.

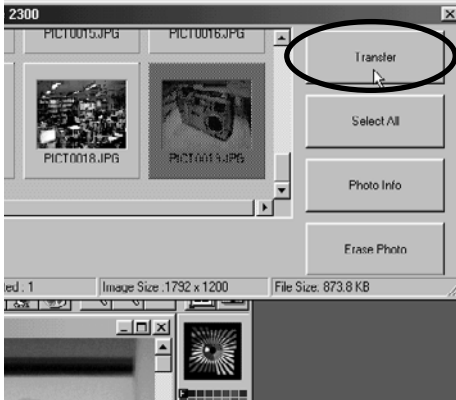
- The selected image files begin to copy. When finished, Dimâge 2300 utility software main window will appear.

USING THE SOFTWARE - CONT'D

When using the TWAIN Driver:

2 Click on 'Transfer'.

- The acquire function will start. When the image is being acquired, a bar graph will show the progress of completion.
- When complete, images are acquired into the TWAIN compliant application (in this case, the MGI PhotoSuite SE), and will be displayed on the monitor.



-
- Further operations on the image are passed on to the MGI PhotoSuite SE. Refer to the MGI PhotoSuite SE's manual for details.
 - The MGI PhotoSuite SE's manual is saved in the D:\Docs folder of the MGI PhotoSuite SE CD-ROM (on the assumption that your CD-ROM drive is drive D) as a PDF file.

USING THE SOFTWARE - CONT'D

DELETING IMAGES FROM THE CF CARD

Some or all of the images can be deleted from the compact flash (CF) card.

1 Click on the images to be deleted.

- The selected image(s) will be highlighted.
- To select two or more images, press and hold Ctrl (Control) key and click on the images to be deleted.
- To delete all the images, click on 'Select All' in the display.

<Dimâge 2300 Utility Software>

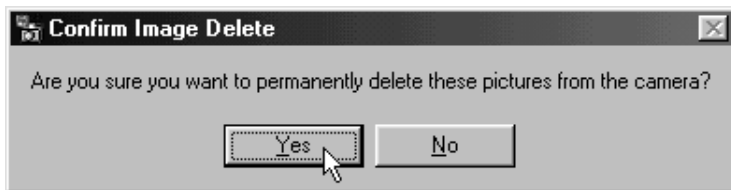
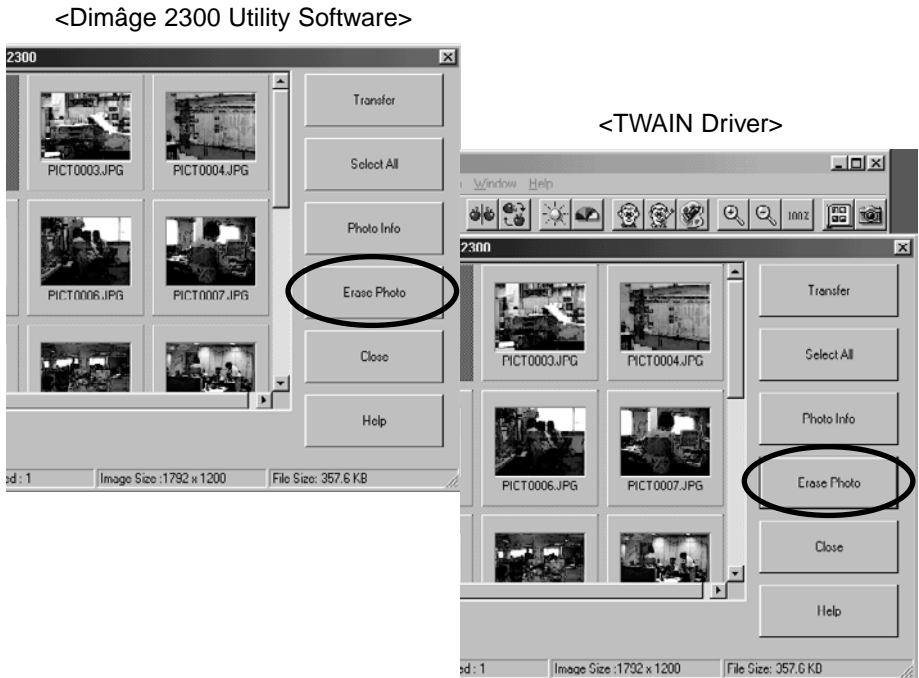


<TWAIN Driver>



2 Click on 'Erase Photo'.

- The confirmation message will appear.



3 Click on 'Yes' to delete images. Click on 'No' to cancel the operation.

USING THE SOFTWARE - CONT'D

VIEWING IMAGE FILE PROPERTIES

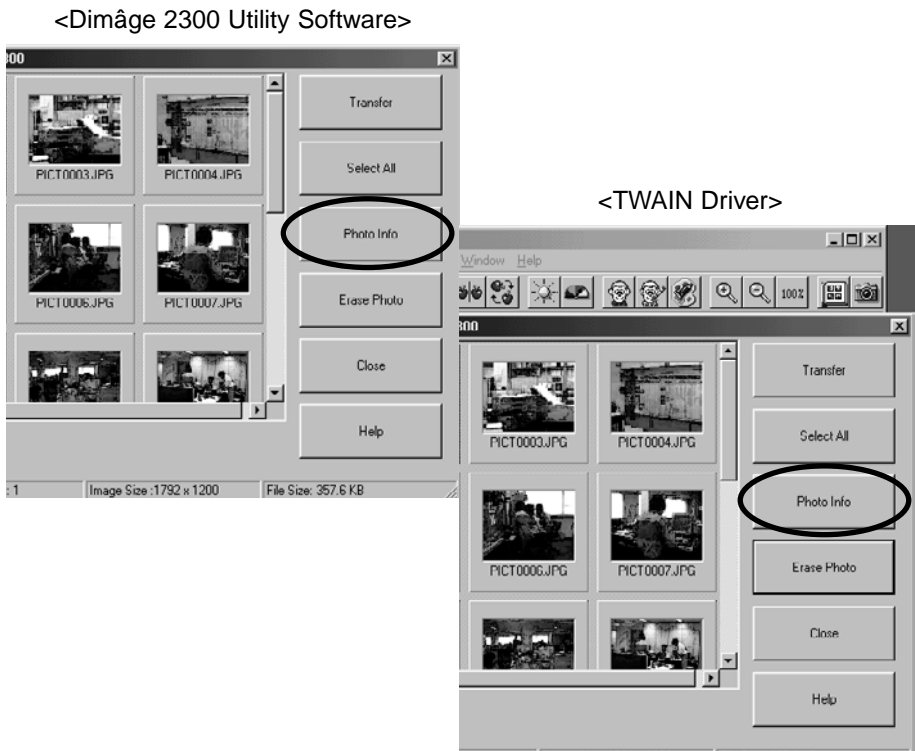
Use the following procedure to view image file properties such as capture date, image size.

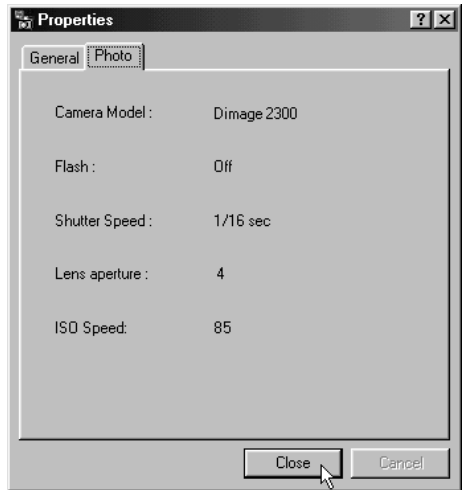
1 Click on the image you wish to view the properties.

- The selected image will be highlighted.

2 Click on 'Photo Info'.

- The properties of the selected image file will be displayed.





USING THE SOFTWARE - CONT'D

QUITTING THE UTILITY SOFTWARE

- 1 Click on 'Close' in the Dimâge 2300 utility main window.
 - The utility software will quit.

<Dimâge 2300 Utility Software>



QUITTING THE TWAIN DRIVER

1 Click on 'Close' in the Dimâge 2300 utility main window.

- The TWAIN driver will quit and the display will return to the TWAIN compliant application (in this case, MGI PhotoSuite SE).

<TWAIN Driver>



- A** Minolta Austria Ges.m.b.H
Amalienstr. 59-61, A-1131 Wien, Österreich
Tel: 01 87868 176
Fax: 01 87868 153
<http://www.minoltaeurope.com>
- B** Minolta Belgium Branch
Prins Boudewijnlaan 1
B-2550 Kontich, België
Tel: 03 451 07 00
Fax: 03 458 50 48
<http://www.minolta.be>
<http://www.minolta.nl>
- CAN** Minolta Canada Inc., Head Office
369 Britannia Road East,
Mississauga, Ontario L4Z 2H5, Canada
Tel. 0905 890 66 00
Fax 0905 890 71 99
<http://www.minolta.com>
- CH** Minolta (Schweiz) AG
Riedstr. 6, CH-8953 Dietikon, Schweiz
Tel: 157 57 11 (sFr 2.15/min)
Fax: 01 741 33 12
<http://www.minolta.ch>
- D** Minolta GmbH
Kurt-Fischer-Str. 50, D-22923 Ahrensburg,
Deutschland
Tel: 0221 93 76 71 50
Fax: 0221 93 76 71 77
<http://www.minolta.de>
- DK** Paul Westheimer A/S
Erhvervsvej 30, DK-2610 Rødovre, Danmark
Tel: 44 85 34 00
Fax: 44 85 34 01
<http://www.minoltaeurope.com>
- E** Videosonic S.A.
c/ Valportillo II, 8, Pol. Ind. de Alcobendas,
E-28108 Alcobendas/Madrid, Spain
Tel: 91 4840077
Fax: 91 4840079
<http://www.minoltaeurope.com>
- F** Minolta France S. A.
365, Route de Saint-Germain,
F-78420 Carrières-Sur-Seine, France
Tel: 0130 86 62 37
Fax: 0130 86 62 82
<http://www.minolta.fr>
- FIN** Minolta Finland Branch
Niittykatu 6, PL 37 SF-02201 Espoo, Finland
Tel: 435 565 0
Fax: 435 565 56
<http://www.minolta.fi>
- GB** Minolta (UK) LTD. Photographic Division
Precedent Drive,
Rooksley, Milton Keynes, MK13 8HF,
England
Tel: 01 908 208 349
Fax: 01 908 208 334
<http://www.minoltaeurope.com>
- IRL** Photopak Sales
241 Western Industrial Estate, Naas Road,
Dublin 12, Ireland
Tel: 01 45 66 400
Fax: 01 45 00 452
<http://www.minoltaeurope.com>
- I** Rossi & C. S.p.A.
Via Ticino 40,
I – 50019 Osmannoro Sesto Fiorentino (Fi),
Italy
Tel.: 055 323141
Fax: 055 32314252
<http://www.minoltafoto.it>
- N** Scandifilm AS
Enebakkveien 304, N-1188 Oslo 11, Norge
Tel: 022 28 00 00
Fax: 022 28 17 42
<http://www.minoltaeurope.com>
- NL** Minolta Camera Benelux B.V.
Zonnebaan 39, Postbus 6000
3600 HA Maarssen, Nederland
Tel: 030 247 08 09
Fax: 030 247 08 88
<http://www.minolta.nl>
- P** Minolta Portugal Lda
Av. do Brasil 33-a, P-1700 Lisboa, Portugal
Tel: 01793 00 16
Fax: 01 793 10 64
<http://www.minoltaeurope.com>
- S** Minolta Svenska AB
P. O. Box 9058, Albygatan 114, S-17109
Solna, Sverige
Tel: 08 627 76 50
Fax: 08 627 76 21
<http://www.minoltaeurope.com>
- Sin** Minolta Singapore (Pte) Limited
10 Teban Gardens Crescent, Singapore
2260
Tel: 56 35 533
Fax: 56 10 217
<http://www.minolta.com>