



KONICA MINOLTA

# ***DiIMAGE Transfer for MAXXUM 7D / DYNAX 7D***

# BEFORE YOU BEGIN

Before installing the DiMAGE Transfer software, the camera firmware may need to be updated. Read this manual and the data-transfer section in the camera manual. The examples in this manual assume the camera is connected to the computer with a USB cable as described in the camera manual.

This instruction manual does not provide instruction in the basic operation of the personal computers, or the basic operation of Windows operating systems; refer to the manuals supplied with the computer.

Every precaution has been taken to ensure the accuracy of this material. Contact Konica Minolta if you have any questions. Konica Minolta is not responsible for any loss or damage caused by the use of this software.

This instruction manual may not be copied either in part or in its entirety without the prior permission of Konica Minolta.

## TABLE OF CONTENTS

System requirements .....	3
About DiMAGE Viewer / DiMAGE Master.....	3
Camera firmware update.....	4
Cameras requiring update .....	4
Software Update License Agreement .....	5
Preparing the CompactFlash card .....	6
Updating the camera firmware.....	7
Installation .....	8
Uninstalling DiMAGE transfer.....	11
Starting up the software .....	12
Quit.....	14
Taking pictures .....	14
Preview window .....	17
Updating the file list.....	19
Viewing images with DiMAGE software.....	20
Preferences.....	22
Preferences window.....	22
File destination.....	22
File name .....	23

Konica Minolta is a trademark of Konica Minolta Holdings, Inc. DiMAGE is a trademark of Konica Minolta Photo Imaging, Inc. Microsoft and Windows are registered trademarks in the United States and other countries of Microsoft Corporation. The official name of Windows is Microsoft Windows Operating System. Pentium is a registered trademark of Intel Corporation. All other brand and product names are trademarks or registered trademarks of their respective owners.

# SYSTEM REQUIREMENTS

IBM PC/AT compatible computers

600MHz Intel Pentium III processor or higher and must meet the operating system requirements.

Windows®XP (Home / Professional)  
Windows®2000 Professional

128MB RAM or the memory required by the operating system, whichever is greater.

200MB or more of available hard-disk space after installation

A True Color (24 bit) or greater monitor  
with a minimum resolution of 1024 X 768 (XGA).

For the camera to be connected, the computer must be equipped with a USB port as a standard interface. The computer and the operating system must be guaranteed by their manufacturers to support USB interface.

## ABOUT DiIMAGE VIEWER / DiIMAGE MASTER

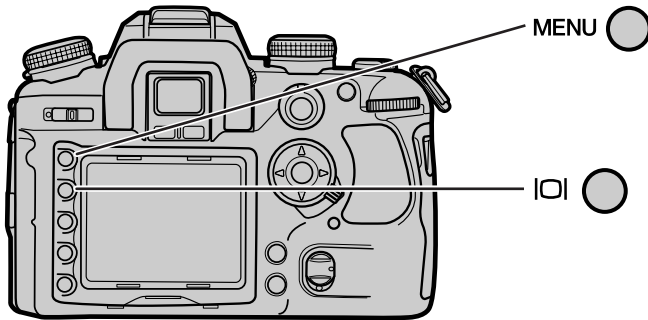
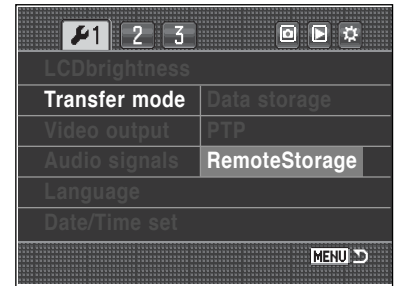
DiIMAGE Viewer or DiIMAGE Master can be launched from DiIMAGE Transfer. DiIMAGE Viewer is installed from the DiIMAGE Viewer CD-ROM supplied with the camera. Many editing and image-processing functions are available. DiIMAGE Master is an optional software that has improved editing and processing tools compared with DiIMAGE Viewer.

To display image files taken with Maxxum/Dynax 7D, DiIMAGE Master or DiIMAGE Viewer (version 2.3.7 or later) must be installed. See the DiIMAGE Viewer or DiIMAGE Master manual for details.

# CAMERA FIRMWARE UPDATE

## CAMERAS REQUIRING UPDATING

If **RemoteStorage** in the transfer-mode option of the setup menu (A) is not displayed, the camera must be updated.



To check the Maxxum/Dynax 7D firmware version, press the menu button, and then press the display button.

The version is displayed under the camera name (B). The version number is followed by “e” or “u” to denote the product region. Press the central button of the controller to close the screen.



If the camera has the 1.10 or later version, do not update the firmware.

To update the camera firmware, a CompactFlash card and a personal computer are necessary.

# SOFTWARE UPDATE LICENSE AGREEMENT

## **GRANT OF LICENSE**

Konica Minolta Photo Imaging U.S.A., Inc. ("Konica Minolta") grants you a license to use one or more copies of the Software specifically for the purpose of copying the Firmware into a Camera in order to update the Camera, subject to the license restrictions set forth below.

You may copy the Software as necessary to update one or more Cameras that you own, as long as the Software is used only with a Konica Minolta camera product. You may also make one backup copy of the Software.

You may not distribute the Software to others, whether or not such others may own Cameras.

## **COPYRIGHT**

The software is owned by Konica Minolta and its Licensors and protected by copyright laws and international treaties. You may not copy the software other than as expressly provided in this license. You may not reverse engineer, decompile, or disassemble the Software.

## **TERM**

This license is effective until terminated. You may terminate it at any time by destroying the Software together with all copies in any form. It will also terminate if you fail to comply with any term or condition of this Agreement. You agree upon such termination to destroy the Software together with all copies in any form.

## **LIMITED WARRANTY**

If you use the Software during the original warranty period of your Camera, as evidenced by a copy of your purchase receipt for your Camera, Konica Minolta will warrant that the Software performs substantially in accordance with the accompanying written materials for the remainder of the original warranty period of your Camera. If you load and use the Software after the original warranty period of your Camera has expired, then you accept the Software "AS IS" without any express warranty.

Konica Minolta does not warrant that the functions contained in the Software will meet your requirements or that operation of the Software will be interrupted or error free. You assume responsibility for operation of the Software to achieve your intended results, and for the installation, use, and results obtained from the Software.

Subject to any applicable legislation which prohibits the following exclusions, KONICA MINOLTA MAKES NO OTHER WARRANTIES OF ANY KIND, EITHER EXPRESS OR IMPLIED, INCLUDING THE IMPLIED WARRANTIES OF MERCHANTABILITY AND FITNESS FOR A PARTICULAR PURPOSE. Some states and countries, including England and Australia, do not allow the exclusion of implied warranties, or have legislation that imposes certain statutory warranties that cannot be excluded, so the above exclusion may not apply to you. This warranty gives you specific legal rights and you may also have other rights.

## **LIMITATIONS OF REMEDIES**

Subject to any applicable legislation which prohibits the following limitations, Konica Minolta's entire liability and your exclusive remedy shall be the replacement of the Software not meeting Konica Minolta's "Limited Warranty", provided that you notify Konica Minolta or your dealer within the original warranty period of your Camera and have a copy of your purchase receipt for your Camera. This remedy is not available if failure of the Software is the result of misuse, abuse, or a failure to follow the operating instructions in the accompanying written materials, or if you load and use the Software after the original warranty period of your Camera has expired. IN NO EVENT WILL KONICA MINOLTA OR ITS SUPPLIERS, LICENSORS OR DEALERS BE LIABLE TO YOU FOR ANY INCIDENTAL OR CONSEQUENTIAL DAMAGES, INCLUDING ANY LOST PROFITS, LOST SAVINGS, OR OTHER DAMAGES ARISING OUT OF THE USE OR INABILITY TO USE THE SOFTWARE EVEN IF ADVISED OF THE POSSIBILITY OF SUCH DAMAGES. Some states and countries, including England and Australia, do not allow the limitation or exclusion of liability for incidental or consequential damages, or have legislation which restricts the limitation or exclusion of liability, so the above limitation may not apply to you.

## **GENERAL**

If the Software was obtained in the United States, this Agreement is governed by the laws of the State of New York without regard to its conflicts of laws rules. If obtained outside the United States, this Agreement is governed by the laws of the country in which it was obtained.

## **U.S. GOVERNMENT RESTRICTED RIGHTS**

The Software and documentation are provided with RESTRICTED RIGHTS. Use, duplication, or disclosure by the Government is subject to restrictions as set forth in subdivision (b)(3)(ii) of The Rights in Technical Data and Computer Software clause 201.574-4000. Contractor / manufacturer is Konica Minolta Photo Imaging U.S.A., Inc. 725 Darlington Avenue, Mahwah, NJ 07430

## **EUROPEAN UNION PROVISIONS**

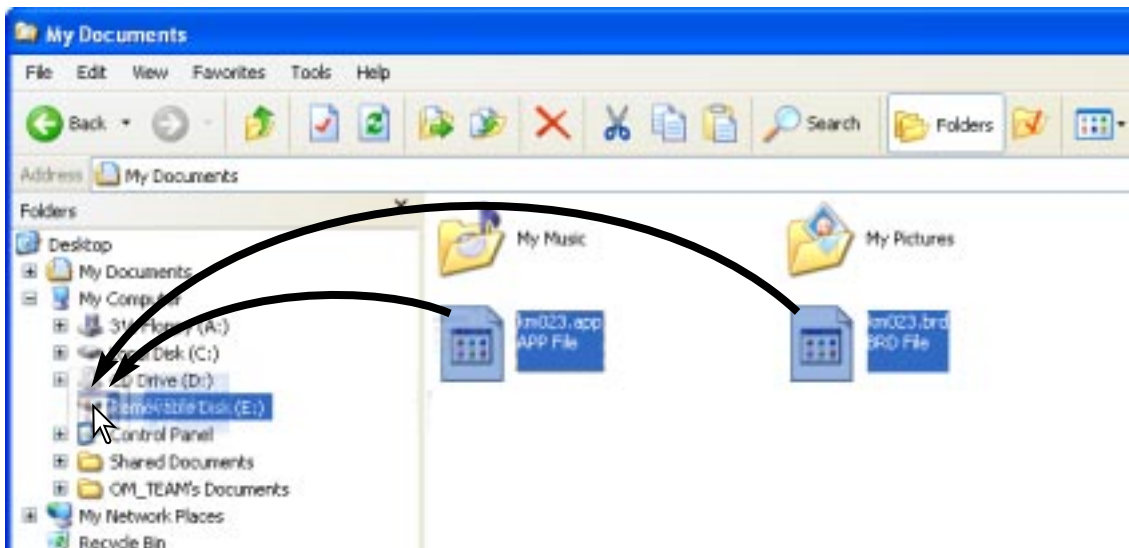
If this Software is used within a country of the European Union, nothing in this Agreement shall be construed as restricting any rights available under the European Community Software Directive (91/250/EEC).

# PREPARING THE COMPACTFLASH CARD

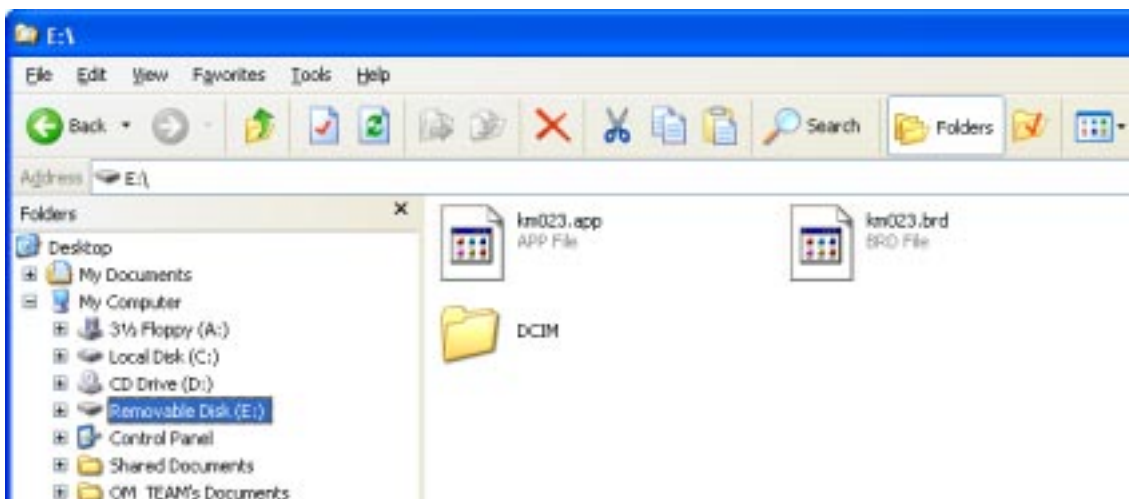
The required files downloaded from the web site must be copied to a CompactFlash (CF) card in the camera. Before updating the camera firmware, read the data-transfer section of the camera instruction manual to connect the camera to a computer.

- Prepare a 16MB or larger CF card by formatting it with the camera.
- Do not use a microdrive to update the camera firmware.
- Using the USB cable, connect the camera with a CF card inside to your computer. If the camera is not compatible with the computer system, a CF card reader connected to your computer can be used instead.

1. Double click the downloaded file “7dv110.exe” to decompress it. The update files named “km023.app” and “km023.brd” are created.
2. Copy the update files onto the CF card. The files should not be copied into a folder such as the DCIM folder.



3. Confirm that the the update files have been copied to the CompactFlash card using the computer.

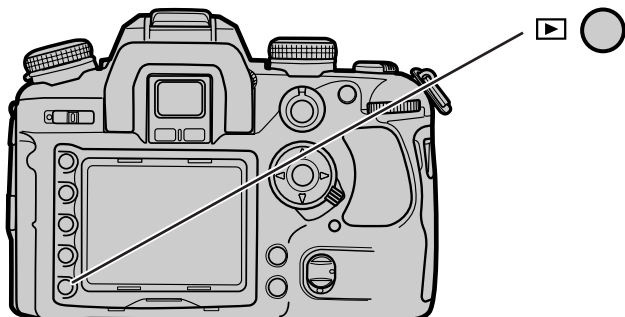


4. Disconnect the camera from the computer or remove the CF card from the drive.

# UPDATING THE CAMERA FIRMWARE

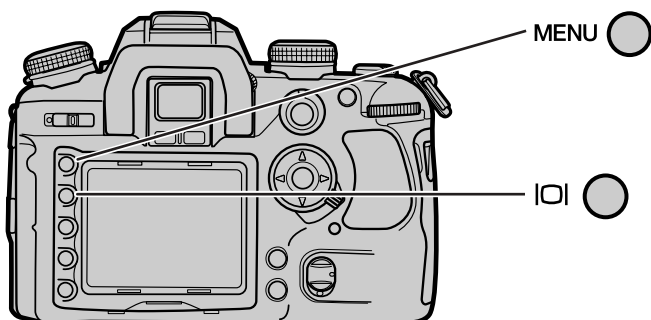
When performing the software update, use a set of fully charged batteries or the AC adapter (sold separately). When using the AC adapter, be sure not to inadvertently disconnect the camera during the software updating procedure, otherwise the camera may be permanently damaged. The camera memory and settings are all reset when the update software is installed.

(C)



1. With the camera off, insert the prepared CF card.
2. Turn the camera on, and press the playback button (C).
3. When the update confirmation screen appears, select “Yes” and press the central button of the controller to begin the firmware update. This process should take about two minutes.
4. When the complete message appears, turn the camera off and remove the CF card.

(D)



5. Turn the camera on and press the menu button (D).
6. Press the display button. Confirm that ver. 1.10 is displayed. The version number is followed by “e” or “u” denoting the product region (E).



7. Press the central button of the controller to close the screen.
8. Reset the camera using the recording-mode reset function. See page 64 in the camera manual.

## Updating Notes:

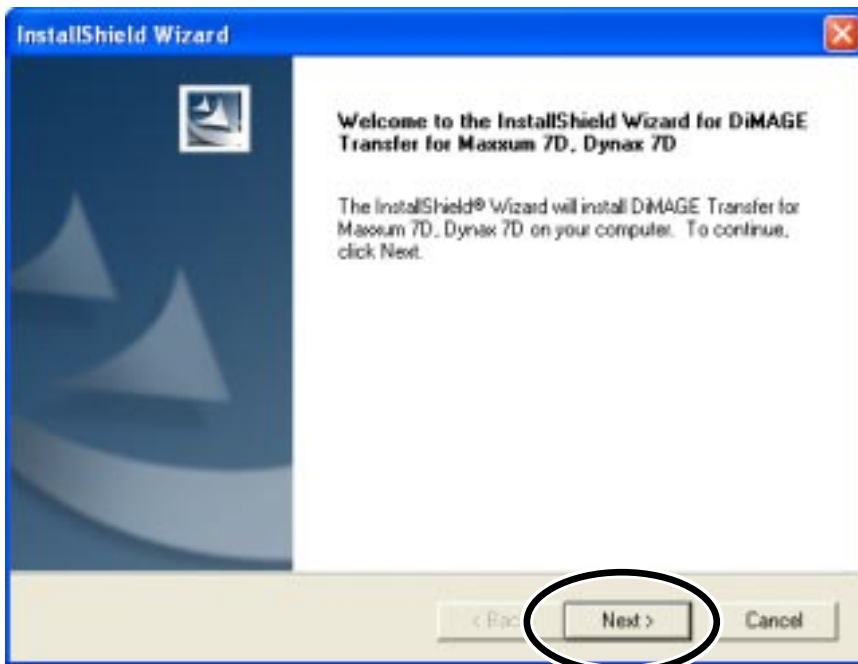
- After updating, delete the update files from the CF card; format the card or remove the files using a computer. If the files remain on the card, the update procedure may repeat.
- If the update was not performed correctly, or an error occurred during the update procedure, an error message appears. Turn the camera off and remove the batteries or disconnect the AC adapter. Repeat the procedure from step 1.
- If any other software version number is displayed or the camera does not work properly, repeat the installation procedure.
- This software update can only be used for versions ending with the letter “u” or “e.” The update will not work with software ending in any other letter.

# INSTALLATION

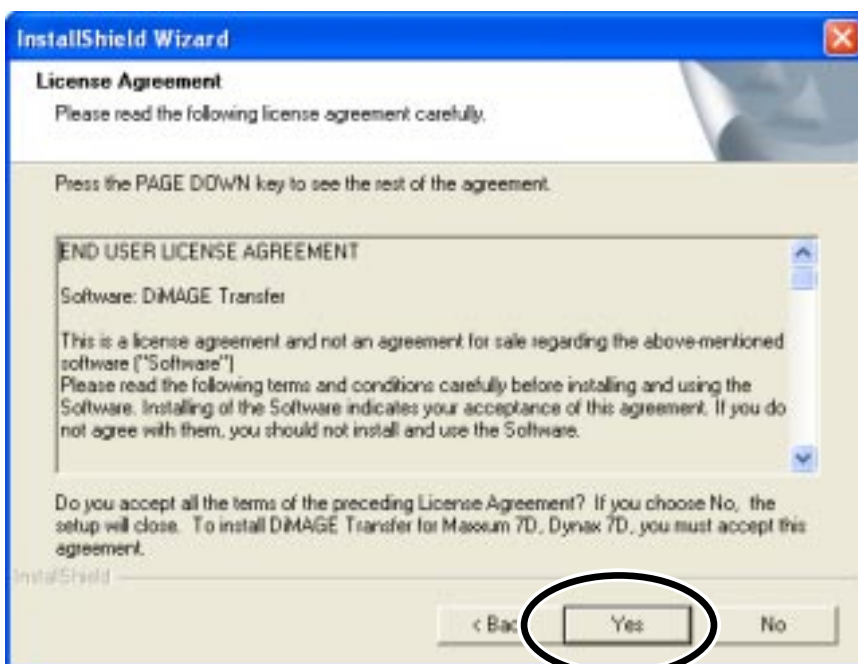
RAM-stationed programs such as anti-virus or installation-monitoring software may cause the installer to fail. Remove or disable these programs before installing DiMAGE Transfer. Reinstall or enable the software when the installation is complete.

In the example below, the hard disk is drive C. The letters designating the drives vary between computers. The software should be installed with the Administrator privilege.

1. Double click the downloaded file “dtv100e.exe” to decompress it. The installation file named “DiMAGE Transfer Installer.exe” is created. If you download two separate files, “dtv100e1.exe” and “dtv100e2.zip”, save them in the same folder and double click the “dtv100e1.exe” file; the installation file is created.
2. Double click the “DiMAGE Transfer installer.exe” file to begin installation.



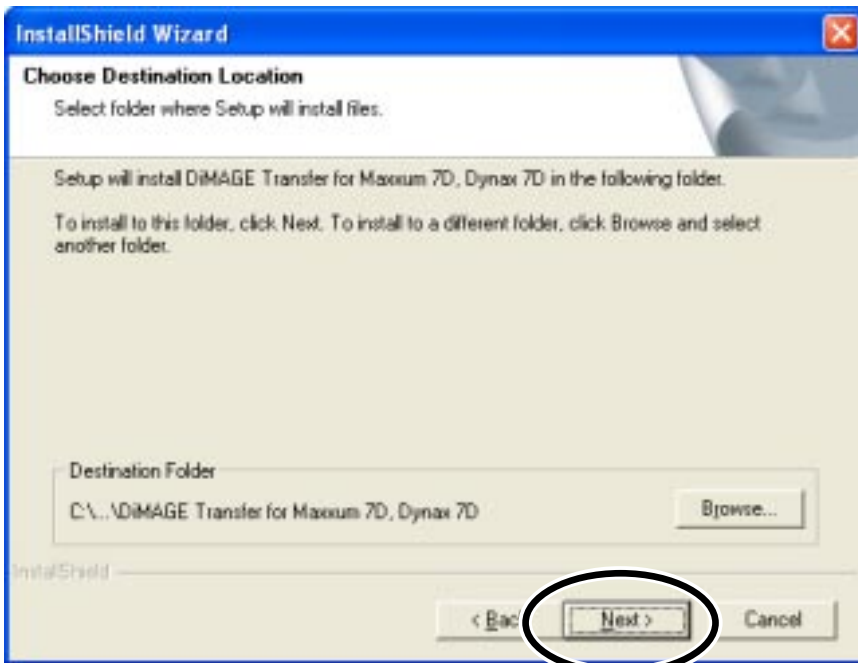
3. The welcome window opens. Click “Next >” to continue.



4. The license agreement appears. If you accept the agreement, click “Yes” to continue the installation routine.

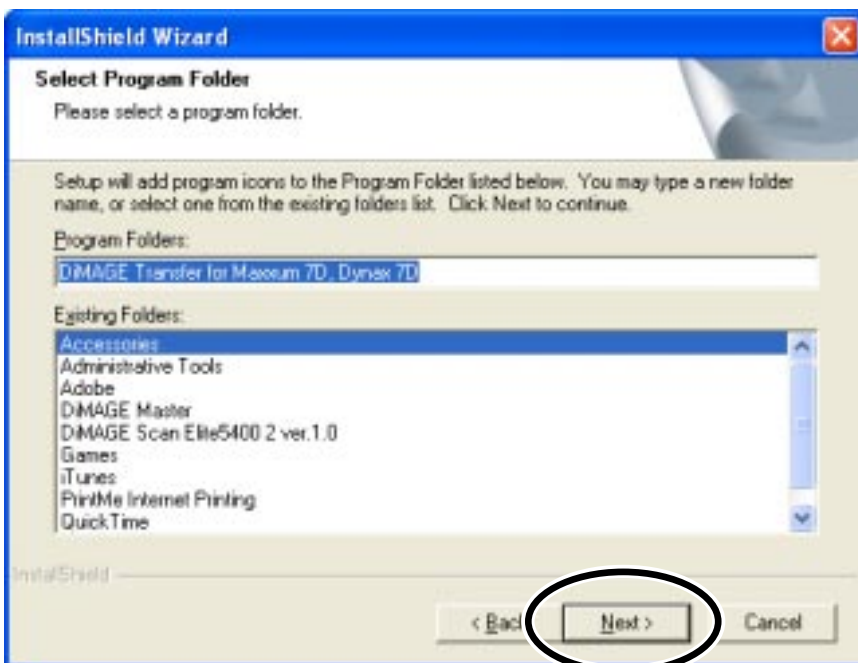
**Read the entire license agreement carefully before continuing. If you do not agree to the terms, click “No” to exit the installation program.**





5. To install the software in the default location (C:\Program Files\DiIMAGE Transfer for Maxxum 7D, Dynax 7D), click “**Next >**.”

To install the software in a different location, click the **Browse** button to display the folder selection window. Specify the directory in which to install the software.



6. The name of the default program folder is displayed. To install the software icons in this folder, click “**Next >**.” Installation begins.

To install the software icons in another folder, select one of the folders listed in the existing-folders box below. Click “**Next >**” to begin installation.

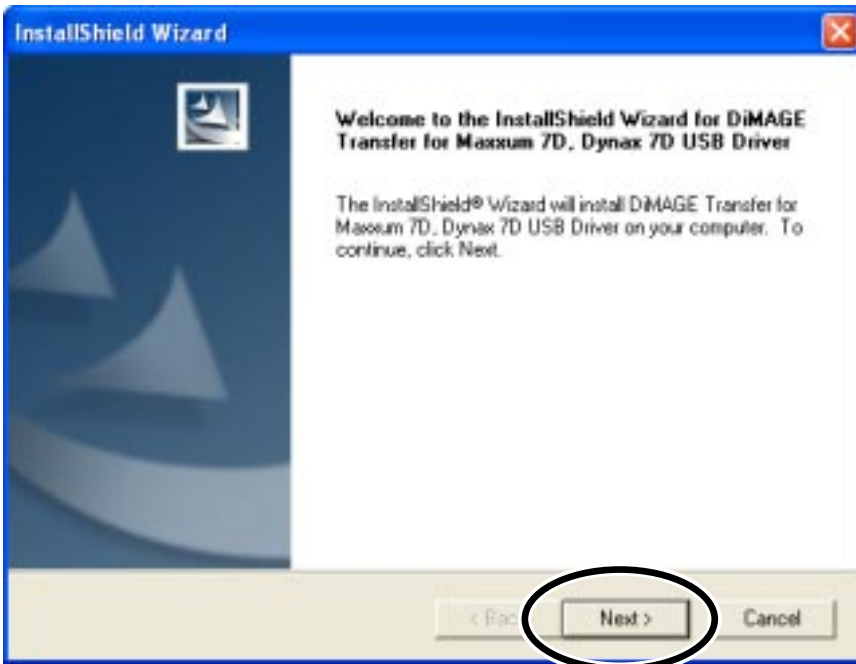


7. When the software installation has been completed, a message is displayed. Click “**Finish.**”

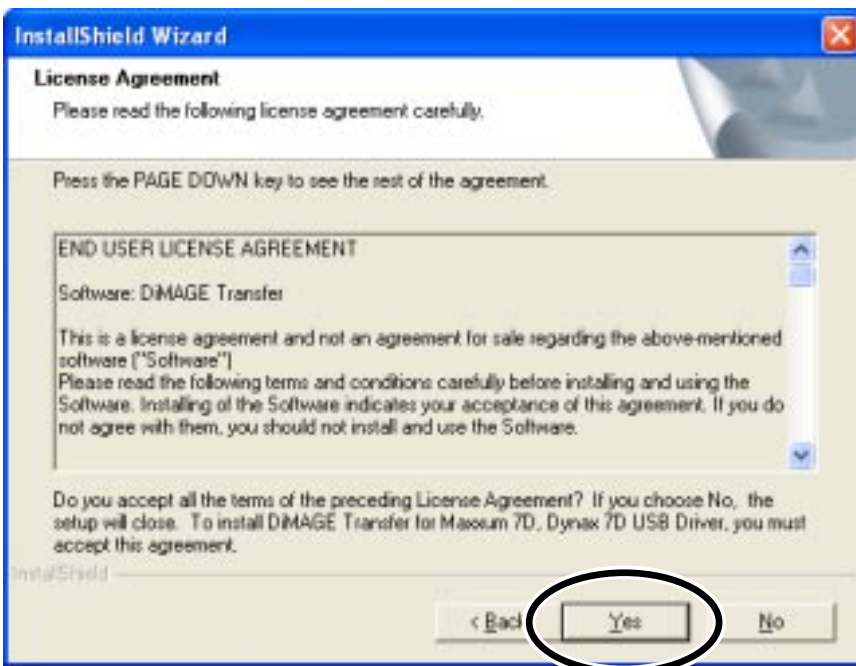
(Continued on next page.)



8. The message shown at left is displayed. Click “OK” to continue.



9. The welcome window opens. Click “Next >” to continue.



10. The license agreement appears. If you accept the agreement, click “Yes.” Installation of the USB driver begins.

Read the entire license agreement carefully before continuing. If you do not agree to the terms, click “No” to exit the installation program.



11. When the USB driver installation has been completed, a message is displayed. Click “Finish.”

## UNINSTALLING DiMAGE TRANSFER

Windows®XP:

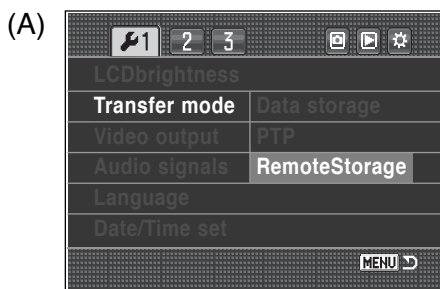
1. Quit the software.
2. Select Start > Control Panel > Add or Remove Programs.
3. Select DiMAGE Transfer for Maxxum 7D, Dynax 7D.
4. Click Change/Remove.

Windows®2000 Professional:

1. Quit the software.
2. Select Start > Settings > Control Panel > Add/Remove Applications.
3. Select DiMAGE Transfer for Maxxum 7D, Dynax 7D.
4. Click Change/Remove.

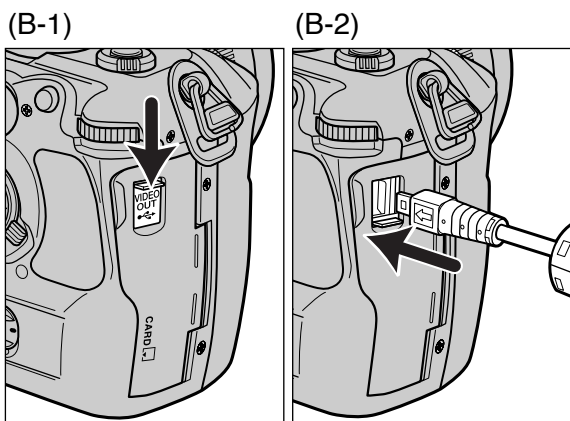
# STARTING UP THE SOFTWARE

1. Start up the computer. The computer must be on before connecting the camera.

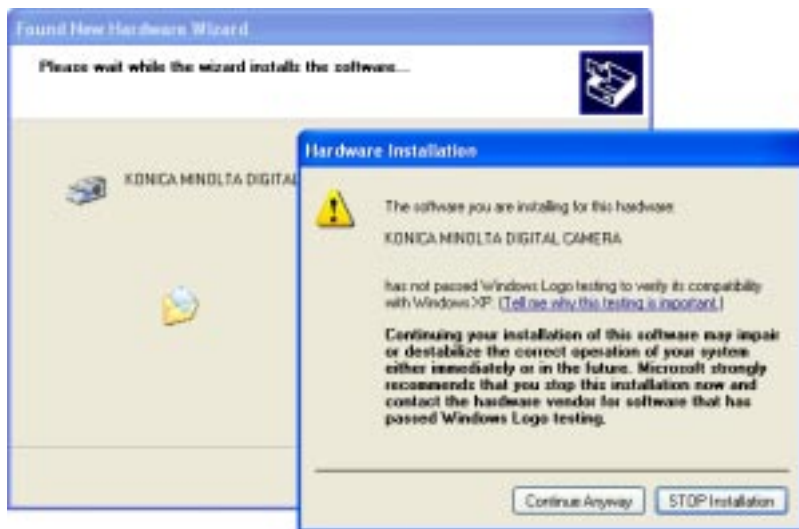


2. Turn the camera on and select “RemoteStorage” from the transfer-mode option in section 1 of the setup menu (A). See camera’s manual for details.

3. Open the AV out / USB port cover on the camera (B-1). Attach the smaller plug of the USB cable to the camera (B-2). The plug should be firmly attached.



4. Attach the other end of the USB cable to the computer’s USB port. The plug should be firmly attached. Only one camera can be connected to the computer. The camera should be connected directly to the computer’s USB port. Attaching the camera to a USB hub may prevent proper operation. A memory card is not necessary.

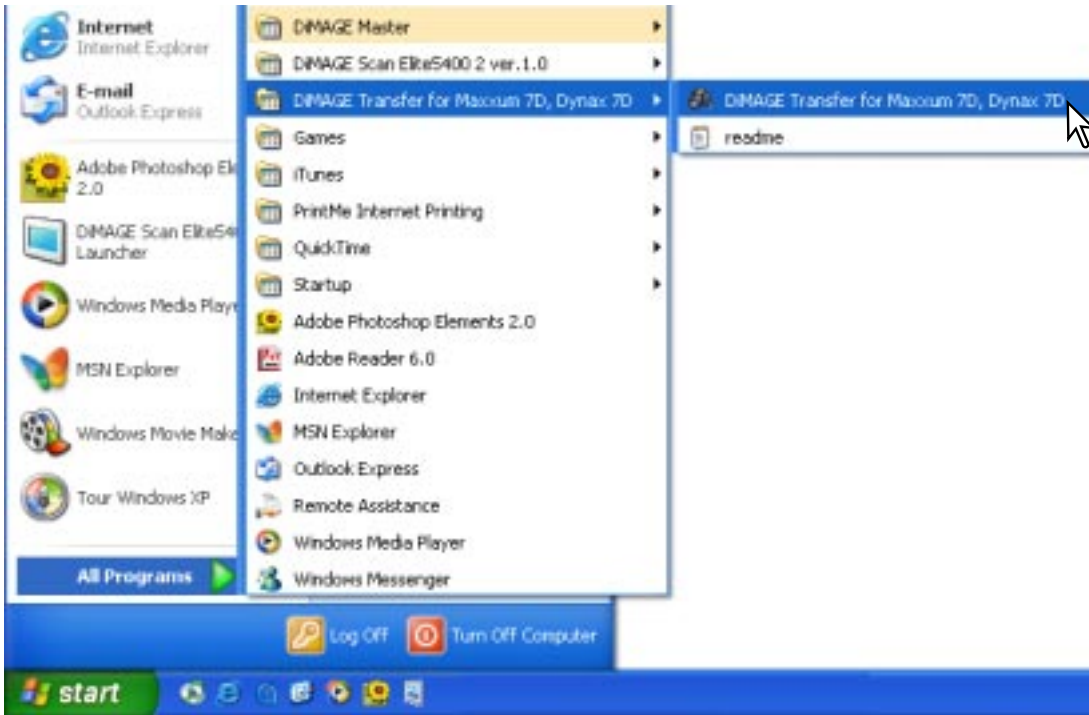


Windows-logo-testing message (Windows®XP) or Digital-signature-not-found message (Windows®2000 Professional) may appear when the camera is connected for the first time. Click “Continue anyway” to continue.



When “Completing the Found New Hardware Wizard” screen appears, click “Finish.”

## 5. Open DiMAGE Transfer.



Windows®XP:

Choose Start > All Programs > DiMAGE Transfer for Maxxum 7D, Dynax 7D > DiMAGE Transfer for Maxxum 7D, Dynax 7D

Windows®2000 Professional:

Choose Start > Programs > DiMAGE Transfer for Maxxum 7D, Dynax 7D > DiMAGE Transfer for Maxxum 7D, Dynax 7D

The main window opens.



When connected, the remaining frames and the hard-disk space is displayed at the lower right corner of the camera LCD monitor.



# QUIT



1. Turn the camera off. The main window changes as shown. Confirm that the remaining frames counter displays a dash and the preferences button is active.

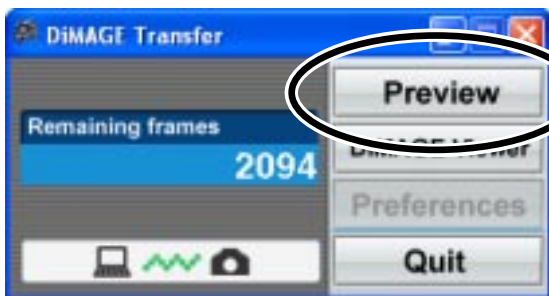
Always turn the camera off before quitting DiIMAGE Transfer or opening the preference window.

2. Click the quit button in the lower right corner of the main window.

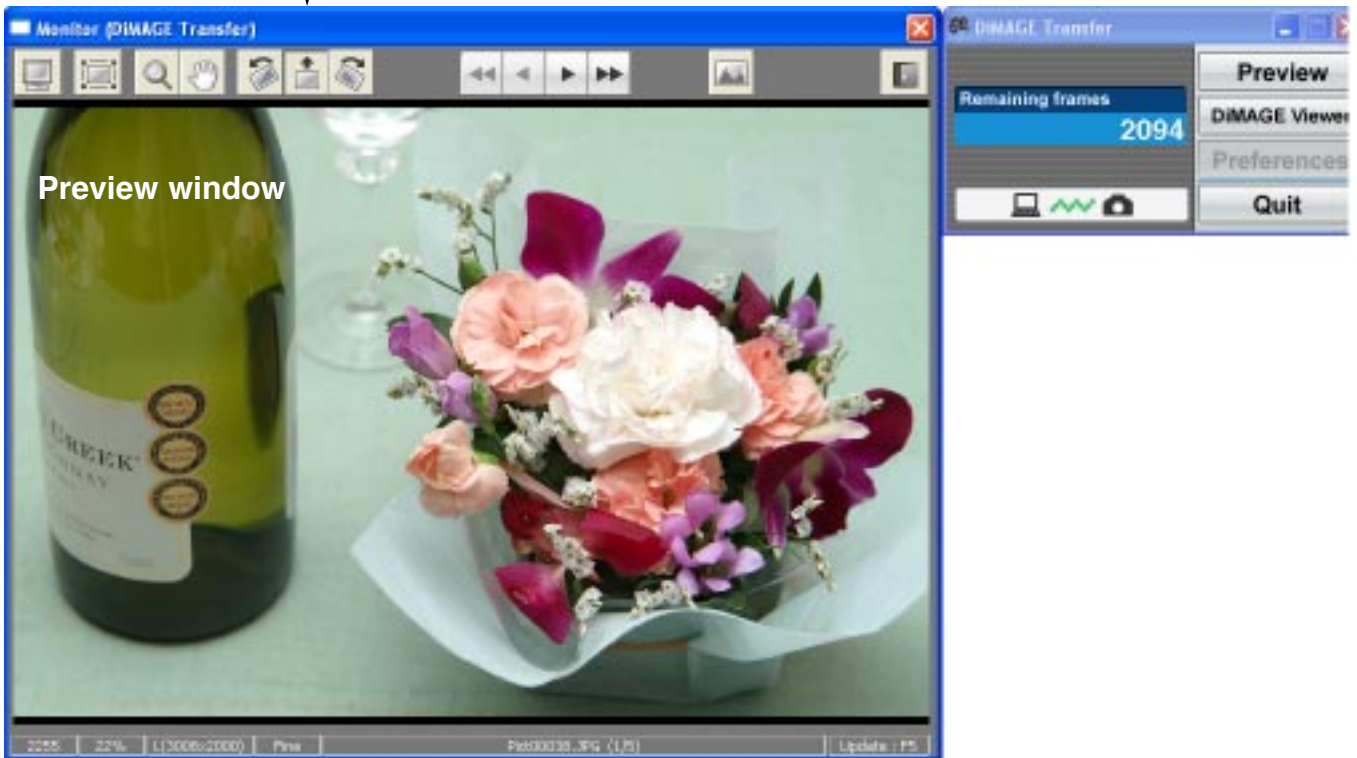
# NOTES

- Fast user switching may prevent DiIMAGE Transfer from operating properly.
- System standby will not work until DiIMAGE Transfer is closed.
- If the low-battery warning appears on the camera, DiIMAGE Transfer cannot be used. The computer and the camera are disconnect automatically after transferring the data.
- Use of the AC Adapter (sold separately) is recommended for extended use.

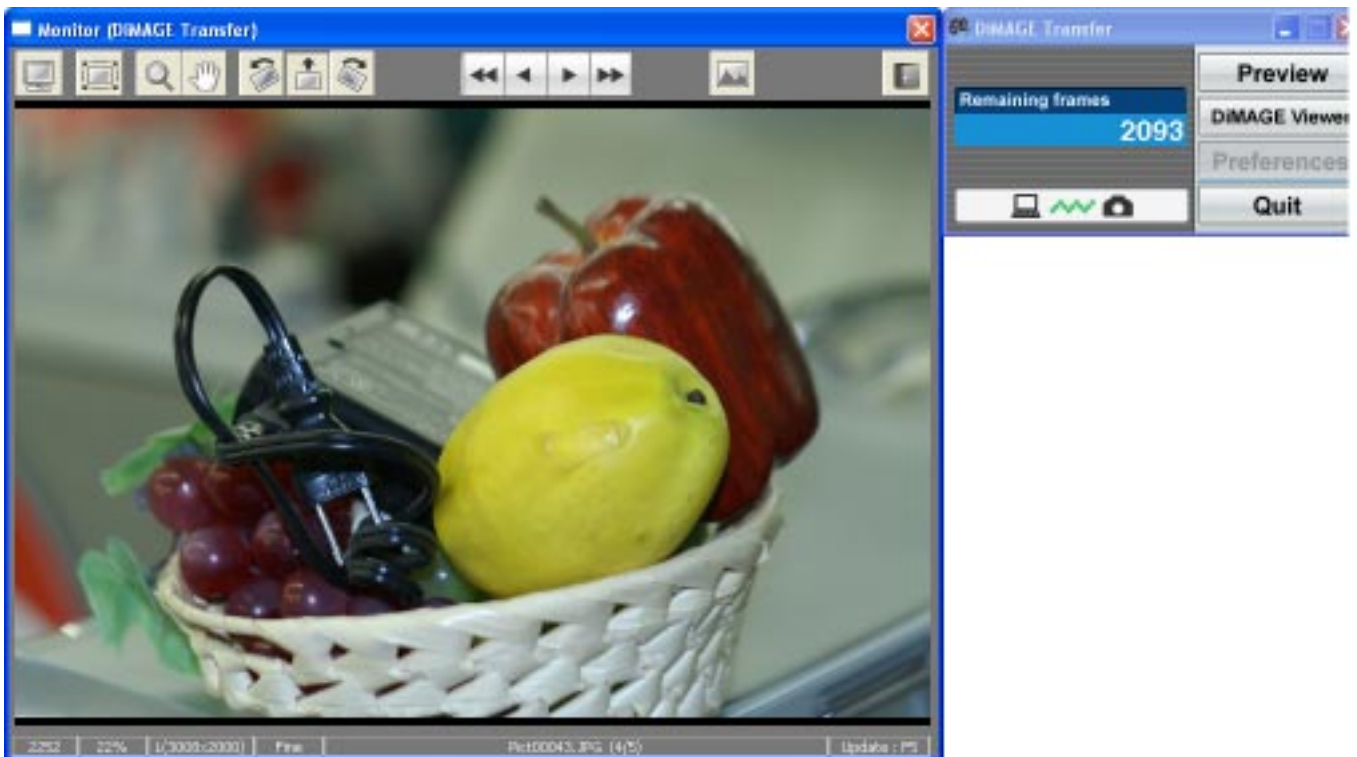
# TAKING PICTURES



1. Click “Preview” in the main window. The preview window opens to the left of the main window. The last image taken is displayed in the window.



2. Press the shutter-release button on the camera to take the picture. The image taken is displayed in the preview window and saved in the My Picture folder at the same time.



- Pictures are saved in the My Picture folder with the default setting. This folder can be changed. See page 22.

(Continued on next page.)

### 3. Pictures can be continued to be taken.

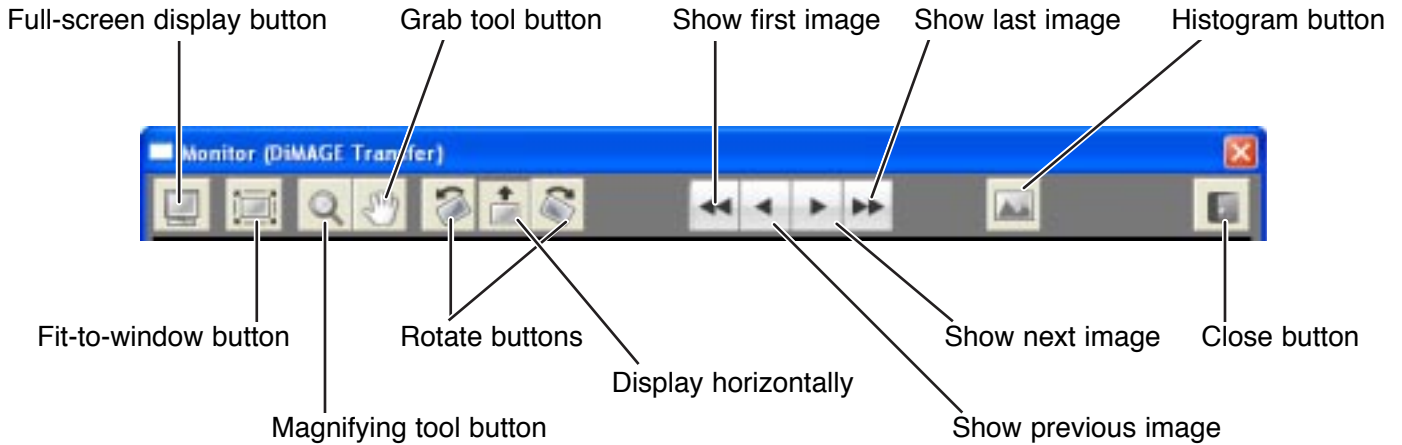
**When taking pictures in the RAW image-quality mode, images taken are displayed in the preview window at a low resolution of 640 X 480 pixels. To display a finer preview image, use the RAW & JPEG image-quality option or launch the DiMAGE Viewer / DiMAGE Master software from this software to view the RAW image files. See page 20 for details.**

## NOTES

- All of the recording mode camera setting such as exposure mode, drive mode, focus mode, and the recording menu settings are made with the camera body only. DiMAGE Transfer can not control the camera settings.
- While connecting the camera to the computer with the DiMAGE Transfer, the playback button on the camera is disabled. During the instant playback period, image can not be deleted or enlarged.
- While connecting the camera to the computer with the DiMAGE Transfer, the setup menu options listed below can not be used.
  - Transfer mode
  - File number memory
  - Folder name
  - Select folder
  - New folder
  - Clean CCD
  - Reset default
- If the low-battery warning appears on the camera, DiMAGE Transfer cannot be used. The computer and the camera are disconnect automatically after transferring the data.
- Use of the AC Adapter (sold separately) is recommended for extended use.



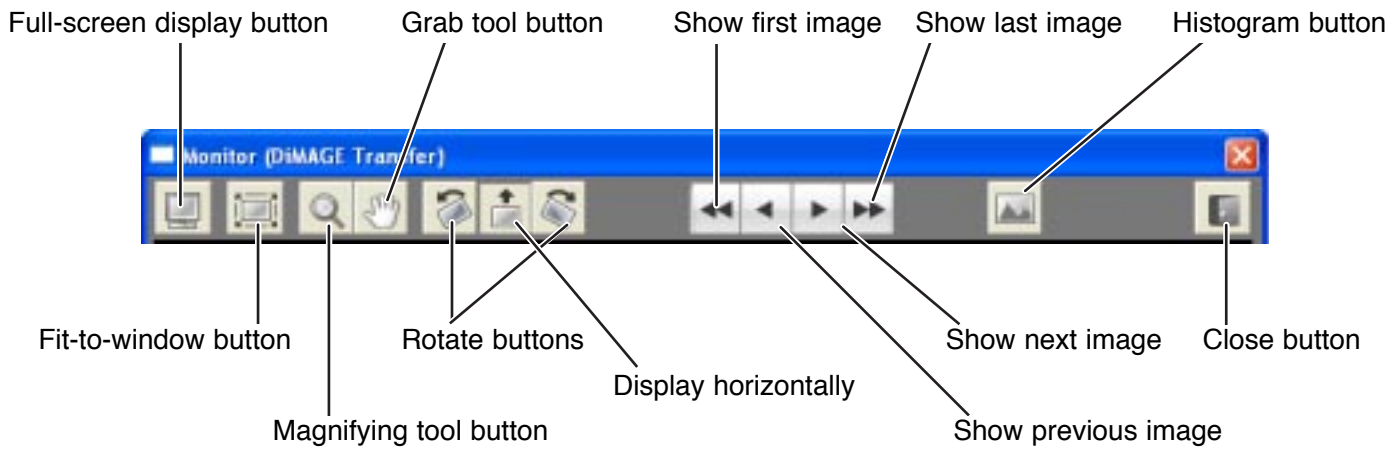
# PREVIEW WINDOW



<b>Full-screen display button</b>	To display the image in the entire monitor area. Press the keyboard escape key to cancel the display.
<b>Fit-to-window button</b>	To resize the image automatically to fit the display area. The magnifying and grab tool cannot be used with the fit-to-window function.
<b>Magnifying tool button</b>	Click on the image to enlarge. To reduce, hold down the keyboard shift key and click on the image. When the image has reached the magnification limit, the plus or minus sign in the magnifier icon disappears.
<b>Grab tool button</b>	When an image is larger than the display area, the grab tool can be used to scroll the image. Click and drag on the image to scroll.
<b>Rotate 90 degrees to left button</b>	Click to rotate the image 90° counterclockwise.
<b>Rotate 90 degrees to right button</b>	Click to rotate the image 90° clockwise.
<b>Display horizontally</b>	Click to display the image horizontally.
<b>Show first image</b>	To display the first image saved in the destination folder <sup>1</sup> . Keyboard shortcut: Home key.
<b>Show previous image</b>	To display the previous image saved in the destination folder from the current image <sup>1</sup> . Keyboard shortcut: right cursor key.
<b>Show next image</b>	To display the next image saved in the destination folder from the current image <sup>1</sup> . Keyboard shortcut: left cursor key.
<b>Show last image</b>	To display the last image saved in the destination folder <sup>1</sup> . Keyboard shortcut: End key.

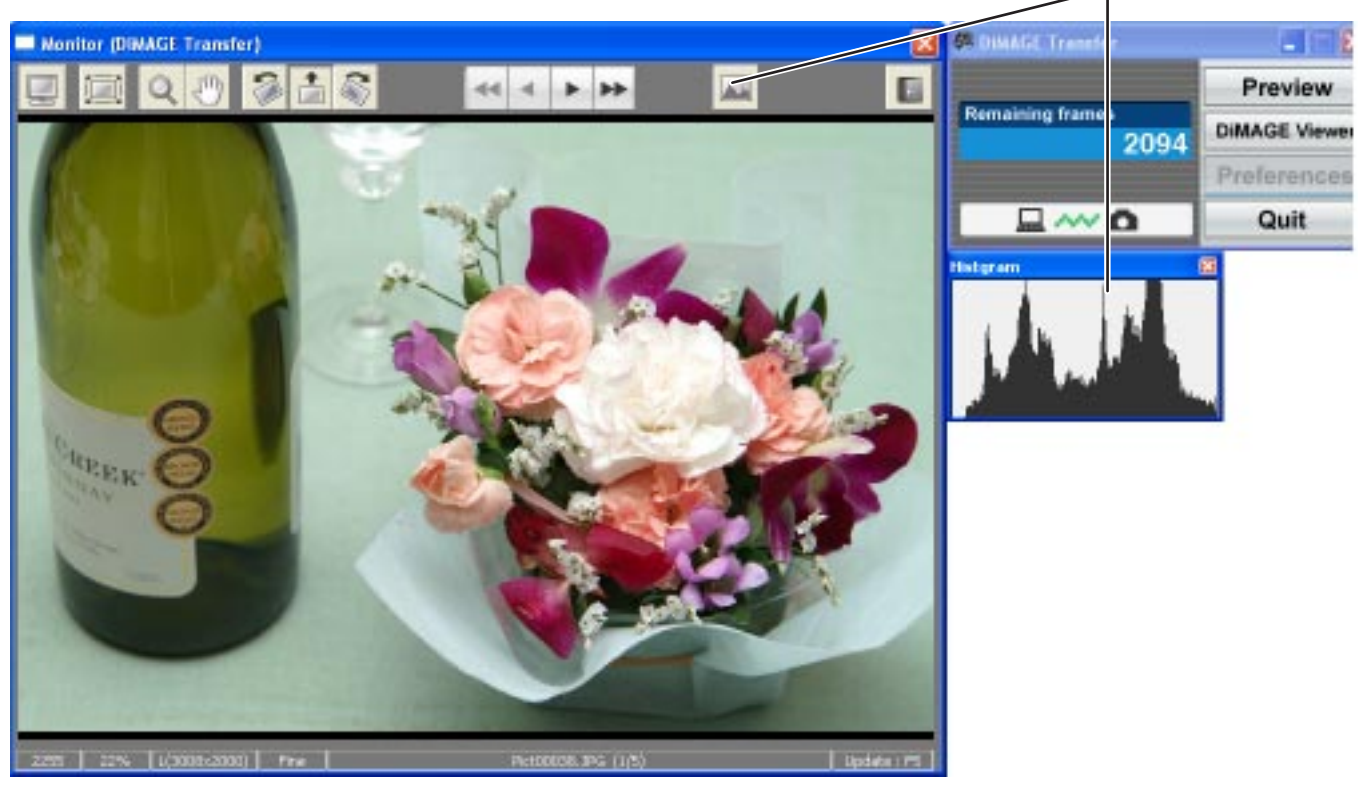
1. The image displayed is based on the date the image was last modified. Processing images and saving them in the destination folder can alter the order the images are displayed.

(Continued on next page.)



<b>Histogram button</b>	<b>To show the histogram of the image displayed in the preview window.</b>
<b>Close button</b>	<b>To close the preview window.</b>

Click histogram button to show the histogram of the image displayed in the preview window.



## STATUS BAR

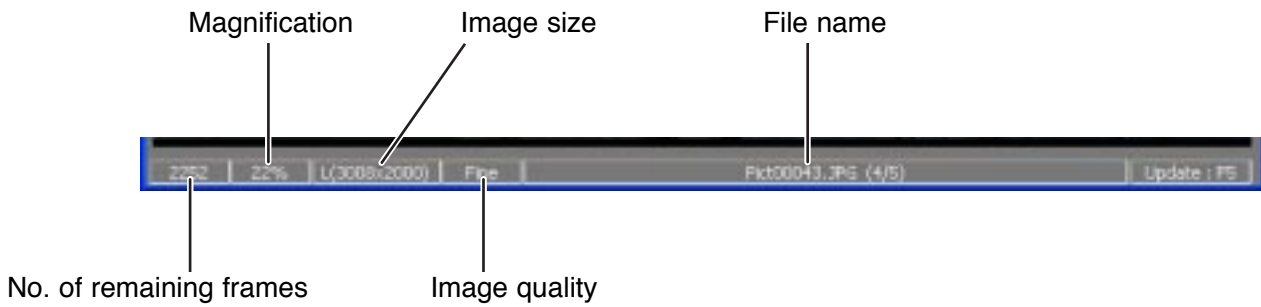


Image number of the image currently displayed



Total number of images saved in the destination folder

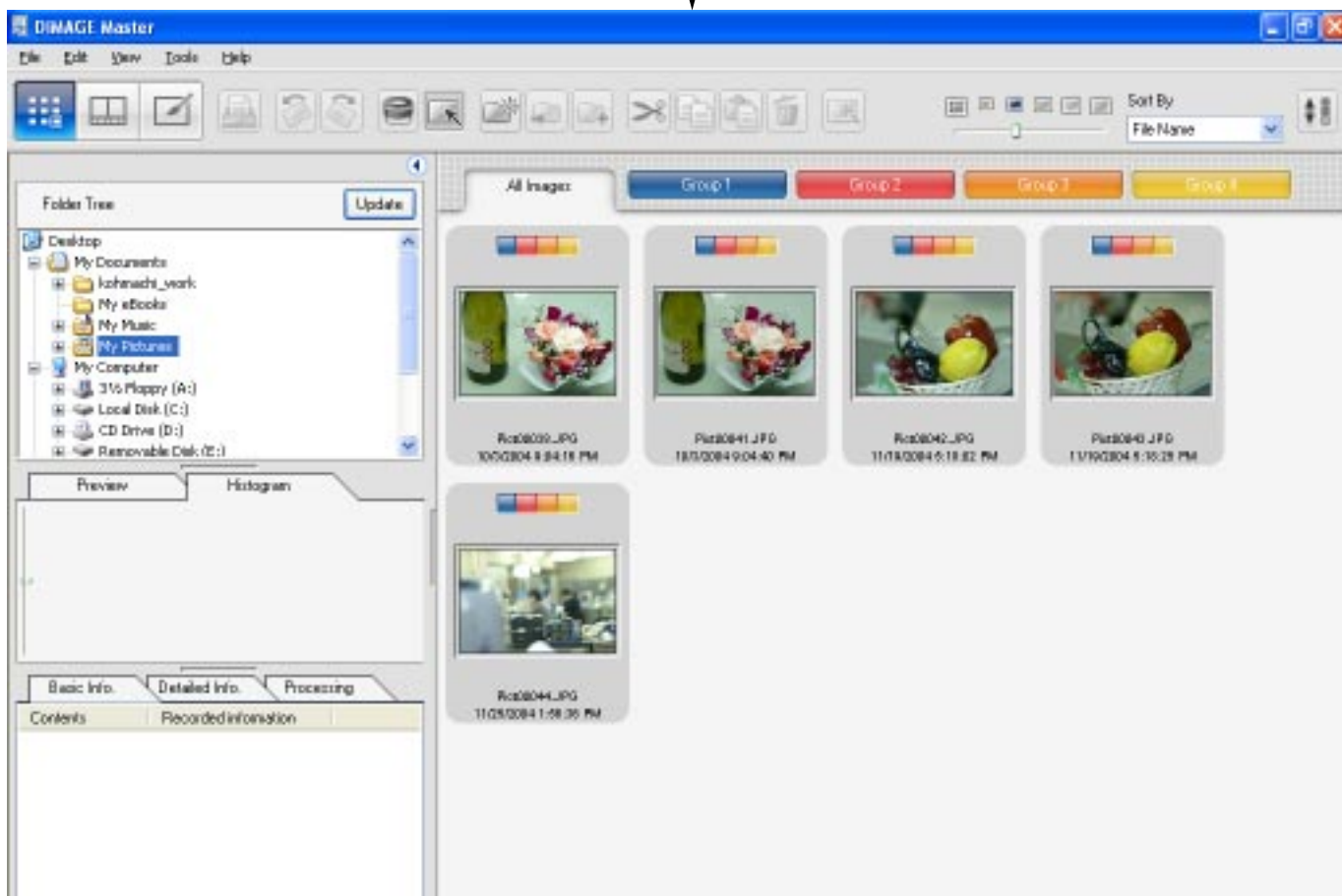
### UPDATING THE FILE LIST

When image data is saved with DiIMAGE Viewer, DiIMAGE Master, or Windows Explorer when using DiIMAGE Transfer, press the F5 key on the keyboard to update the file list so images are displayed correctly in the preview window.

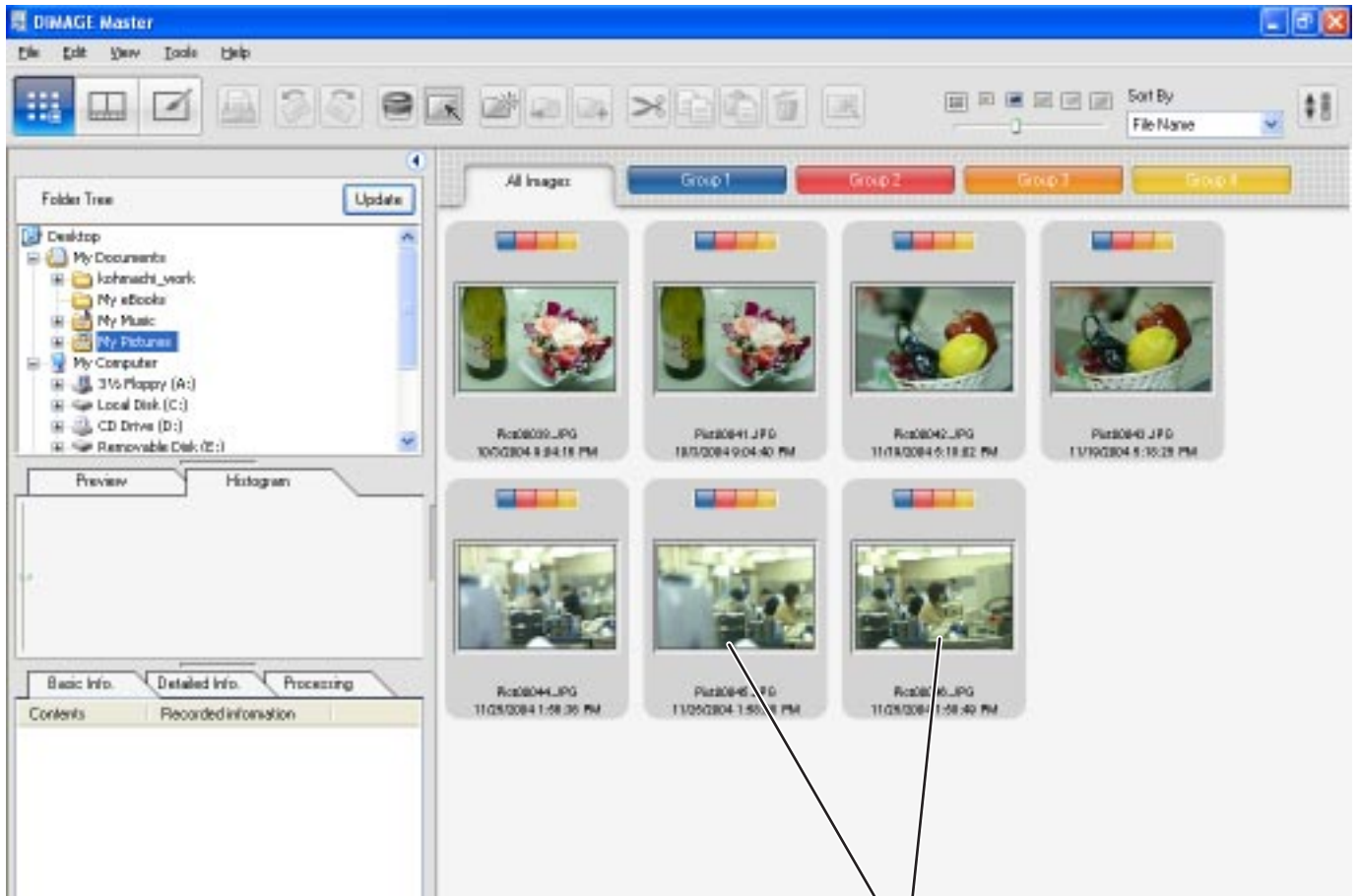
# VIEWING IMAGES WITH DiIMAGE SOFTWARE

The DiIMAGE Viewer or DiIMAGE Master can be launched from DiIMAGE Transfer. DiIMAGE Viewer is supplied with every Konica Minolta camera. Many editing and image-processing functions are available. DiIMAGE Master is an optional software that has improved editing and processing tools compared with DiIMAGE Viewer. DiIMAGE Viewer version 2.3.7 or later is required to view images taken by a Maxxum/Dynax 7D.

1. Click “DiIMAGE Viewer” in the main window; the DiIMAGE Viewer or DiIMAGE Master is launched automatically and the image thumbnails saved in the destination folder are shown. If both the DiIMAGE Viewer and DiIMAGE Master are installed, DiIMAGE Master is launched.



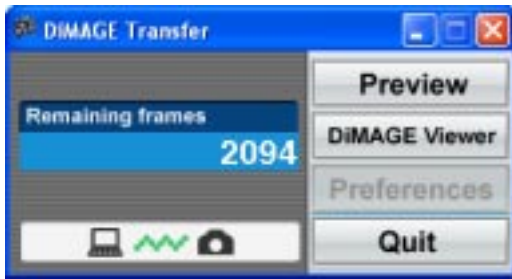
2. Press the shutter-release button on the camera to take pictures. Images taken are added automatically to the DiMAGE Viewer or DiMAGE Master thumbnail display.



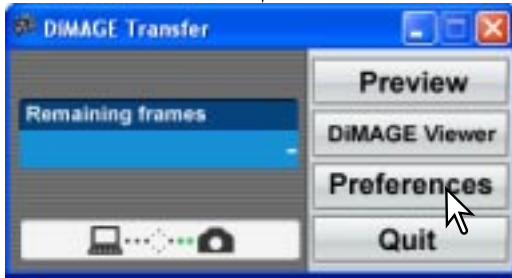
Images taken are added automatically to the thumbnail display.

# PREFERENCES

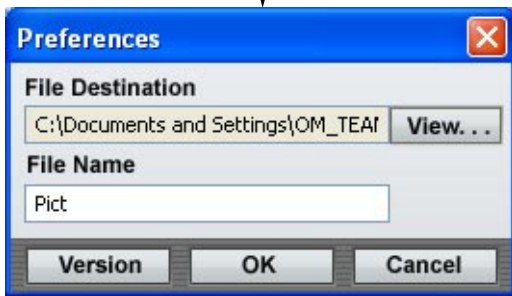
## PREFERENCES WINDOW



1. Turn the camera off. The main window changes as shown. Confirm that the remaining frames counter displays a dash and the preferences button is active.



2. Click the preferences button in the main window. The preferences window opens.



## FILE DESTINATION



Images are saved in the My Picture folder. This can be changed.

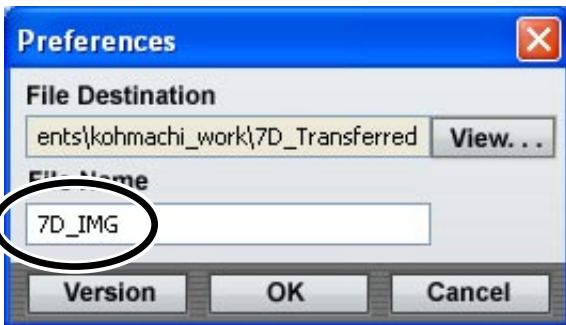
1. Click "View..." next to the file destination option to open the folder tree.





2. Select the folder to save the images. Click “OK” to complete the operation. The folder name can be changed using the keyboard’s F2 key. A new folder can also be created in this window.

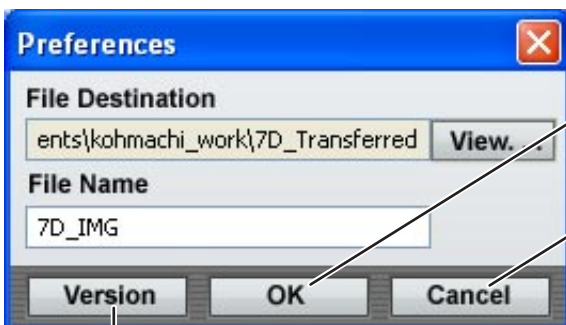
## FILE NAME



A file name consists of up to 16 alphanumeric characters, followed by a five-digit serial number. The file name for captured images can be specified. The serial number is attached automatically and cannot be changed.

Use alphanumeric characters which are appropriate in file names in Windows operating systems. Invalid character cannot be used.

If the serial number exceeds 99999, additional pictures cannot be saved in the destination folder. A new folder must be selected or made, or the file name changed.



Click “OK” to close the preferences window and applies all changes.

Click “Cancel” to close the preferences window without saving changes.

Click “Version” to display the splash screen showing the version number of this software.



**KONICA MINOLTA**

**KONICA MINOLTA PHOTO IMAGING, INC.**

© 2004 Konica Minolta Photo Imaging, Inc. under the Berne  
Convention and the Universal Copyright Convention.

9224-7306-11 X- B502